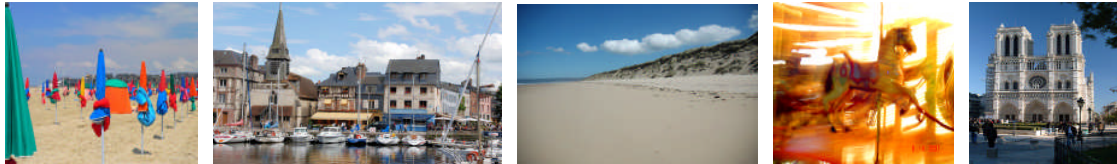




Itinerary for a Five Day Languages Study Tour to Normandy.

Dates: To Be Decided.



The itinerary is designed to balance visits of the greatest interest with recreative activities. It aims to make the maximum use of time without exhausting participants. The itinerary we have proposed is flexible and is only finalised after discussion with the Party Leader(s). Flexibility is also built into the holiday itself as changes can be made at very short notice according to weather conditions etc. The visit will be guided throughout. All excursions are well-prepared and are backed by museum handouts and a commentary. The director is able to run the holiday according to Party Leader wishes. In this way Party Leaders will be free to concentrate on the care of their pupils rather than the organisation of the tour. The whole stay is underpinned by excellent accommodation, catering, transport and security.



ACCOMMODATION



Hotel Novotel,

Rue de la Mare Aux Sangsues 76800 Saint Etienne Du Rouvray, France.

Tel: (+33)2/32917676 Fax: (+33)2/32917686 E-mail: H0432@accor.com

Our hotel lies in the south of the historic city of Rouen - capital of Normandy. The cities of Bayeux, Caen & The D-Day Landing Beaches are within a short drive & the hotel is well located for our groups visiting the Normandy region of France.

There is a pleasant bar & lounge area in the hotel. All of the bedrooms have en-suite bathrooms, televisions, reading desks, telephones & internet access. All rooms are serviced daily. The manager heads a particularly friendly staff & we have found the Novotel in Rouen to offer a very comfortable base for our groups in Normandy.

DAY ONE

<u>06.30</u>	Coaches arrive at School.
<u>06.45</u>	Depart School. Onward transfer to Dover.
<u>09.45</u>	E.T.A. Port of Dover. Check in for next crossing.
<u>10.45</u>	Depart Port of Dover.
<u>13.00</u>	Arrival at Port of Calais. Onward transfer to Boulogne.

(Note: Continental time is one hour in advance of British time)

13.45 **Visit to The Nausicaa Sealife Centre, Boulogne.**

Nausicaa is one of the best sea-life centres in Europe. The huge collection of sea creatures is cleverly presented to make the most of what has become one of our favourite visits. At one point, for example, the pupils will be able to touch and stroke flat fish as they swim by. The visit is enhanced by a video presentation which serves as a build up to the grand finale of the visit - the underwater shark-viewing chamber. There is a shop and a pleasant cafe for refreshments .

Because the sealife centre is located by the shore, pupils will have the opportunity of enjoying recreative activities on the beach.

16.45 Onward Transfer to Flunch Restaurant, Boulogne.

17.15 **Dinner at the Flunch Restaurant, Boulogne.**
www.flunch.fr

19.00 Onward transfer to Hotel Novotel, Rouen.

21.00 E.T.A. Hotel Novotel, Rouen.

On Arrival at the Hotel:

Luggage will be unloaded onto the forecourt just outside the main entrance to the hotel. Participants are requested to identify their luggage and take it into the vestibule. Rooms will be allocated and participants given their keys.

DAY TWO

08.00 Breakfast.

09.15 Transfer to Bayeux.

11.00 **E.T.A. The Bayeux Tapestry.**

During our journey to Bayeux the Director will tell pupils about the city and the tapestry, in particular the Battle of Hastings and the liberation of the city in 1944.

The Tapestry exhibition offers a number of attractions:

1. A model of a Norman soldier on horseback.

Here we talk about the soldier's armour, his saddle and his use of stirrups which had a marked effect on the outcome of the battle.

2. An exhibition illustrating the stages of William the Conqueror's campaign.

There are also life-sized models taken from the tapestry. We will use these to introduce the pupils to the characters involved in the story.

3. A film, in English, describing the campaign.

This lasts for 20 minutes and is very informative and interesting.

4. The tapestry itself.

Participants can use headphones to listen to the story of the tapestry as they view each stage.

5. A spacious shop

This sells an excellent range of postcards, posters, books etc.

We will then return to the coach which will be waiting for us in a conveniently located special coach park.

12.15 **Free Shopping Time in Bayeux.**

Pupils will enjoy visiting the central shopping street of Bayeux with its traditional shops & local produce stores. Many groups also enjoy visiting the interior of the ancient Bayeux cathedral.

13.00 Picnic lunch in the grounds of The Bayeux Tapestry.

14.00 **The Allied Cemetery, Bayeux.**

We will pause to pay a brief visit to the graves of those Allied (and some German) soldiers that were killed during the first few days of the Normandy campaign. The youngest person in the cemetery is a 14 year old English private and the northern end of the cemetery contains many German soldiers who were killed in their defence of Bayeux.

14.30 Transfer to Arromanches.

15.00 **The Arromanches D-day Landing Beaches.**

The Invasion Beaches lie only 11 kilometres from Bayeux. Here the visit will be divided into two parts:

1. An inspection and explanation of 'The Mulberry Harbour'.
2. Recreation on the beach. We usually hold a sandcastle competition with ice-creams as prizes.

17.30 Transfer to Caen.

18.30 **Dinner at the Flunch Restaurant, Caen.**

20.00 Transfer to Hotel Novotel, Rouen.

21.15 E.T.A. Hotel Novotel, Rouen.

DAY THREE

08.00 Breakfast.

09.15 Coach transfer to Honfleur.

10.45 **Visit to Honfleur.**

We will visit the beautiful & historic port town of Honfleur, closely associated with the Impressionist movement. The ancient Norman port is lined with art galleries & restaurants. Many pupils enjoy purchasing an ice-cream & visiting the various shops around the port, where the ancient houses & old boats can make for good photographs.

12.00 Lunch in Honfleur.

12.45 Transfer to Deauville.

13.45 **Afternoon Recreation Time on Deauville Beach.**

The glamorous Norman seaside resort of Deauville is often known as 'Paris Plage' as the wealthy Parisians descend on the town every summer for the long sandy beach, the casino & the fine restaurants. As we approach the beach, pupils will notice the huge Norman-style hotels which line the beach. We will enjoy some recreation time on the beach & the Tour Director will organise a game of football or a sandcastle competition.

15.00 Coach transfer to Rouen.

16.15 **Guided Walking Tour of the Ancient City of Rouen.**

The Tour Director will conduct a guided visit of the city centre. This will include the Cathedral of Notre Dame, the Rue de l'Horloge and the Old Market Place, where Jean d'Arc was burned at the stake. The pupils will sit on the ruins of the original market church while the Tour Director tells the story of the life and death of the Saint. After a coffee break and an opportunity for shopping in the pedestrianised Rue de l'Horloge, the morning's excursions will end with a walk through the medieval streets and alleyways. We will pass the actual courthouse where Jean d'Arc was tried to get to the Old Burial Pits of St. Maclou - closely associated with the Black Death of 1350. The Tour Director will give an account of the Black Death in Rouen and examine the soil for remains of human bone, which often work their way to the surface. Behind a glass sheet the pupils will be able to look into a wall cavity to see a mummified black cat that died in Rouen during the Black Death. Today St. Maclou is one of the most prestigious art schools in France.

18.30 Dinner at the Flunch Restaurant, Rouen.

20.00 Transfer to Hotel Novotel, Rouen.

20.30 E.T.A. Hotel Novotel, Rouen.

DAY FOUR

07.30 Breakfast.

08.00 Transfer to Disneyland Paris.

11.00 **Day's Visit to Disneyland Paris.**

We will spend the whole day in Disneyland Paris, where participants will be able to ride on the many excellent rides & view the attractions which take place throughout the day. Rides include Thunder Mountain, The Haunted House, The Indiana Jones Ride, Honey I Shrunk The Kids, Star Wars & the largest rollercoaster in the park - Space Mountain. The group can meet to watch the Disney Parade at 15.00.

In order to maximise the amount of time spent within the park, we will enjoy our dinner in the Disney Park before returning to the hotel in the evening.

18.00 Dinner at Disneyland Themepark.

19.30 Return transfer to Hotel Novotel, Rouen.

22.30 E.T.A. Hotel Novotel Rouen.

DAY FIVE

08.00 Breakfast & loading of suitcases onto coaches.

09.30 Transfer to Boulogne.

12.00 **Recreational Time on Boulogne Beach.**

Pupils will have the opportunity to play beach football or have a sandcastle competition before the transfer back to the UK after lunch.

13.30 Transfer to Calais.

14.15 **Visit to The Cite de Europe Hypermarket, Calais.**

The Cite of Europe hypermarket is the largest in Europe and is popular with the many British shoppers who take advantage of the great differences in price between the same goods in Calais and in the UK. Most shops in the complex take Pounds Sterling as well as Euros.

16.30 Onward transfer to Port of Calais.

17.30 E.T.A. Port of Calais. Check in for next crossing.

18.25 Depart Port of Calais.

18.45 E.T.A. Port of Dover. Onward transfer to School.

Local time

21.00 **E.T.A. School.**

OPTIONAL DAY'S VISIT TO PARIS

08.00 Breakfast

09.00 Coach transfer to central Paris.

11.30 **Ascent of The Eiffel Tower**

The Eiffel Tower continues to be the symbol of Paris. It lost its title as the world's tallest building 50 years ago to the Empire State Building. Built for the World Fair of 1889, the Tower is 307 metres high and one can see for a distance of 45 miles on a clear day.

The Tower was originally granted 20 years of life but its use for radio telegraphy saved it from demolition in 1904.

We will take the lift to the second floor, where there is a cafe and a spectacular view. Pupils can then descend to the first floor to view the excellent exhibition on the Tower. We will then meet at the bottom of the North Pillar at an arranged time.

Lifts ascend from the lower level to the fourth level, comprising a series of rooms housing the world's largest display of Impressionist and Post-Impressionist work.

There are terraces overlooking the central court which display sculptures from 1870 to 1914. The N.E. corner accommodates material on the early history of cinema.

13.00 Lunch on Champ de Mars

13.30 Transfer to The Bateaux Mouches.

14.00 **Guided Cruise on the River Seine on the Bateaux Mouches.**

We will enjoy a one hour cruise on the River Seine with Bateaux Mouches. This will take us round the Ile de la Cite and the Ile St Louis and offer views of Notre Dame Cathedral, the Conciergerie, the Place de la Concorde and the Eiffel Tower.

16.30 **Montmartre, The Sacre Coeur Church and the Place du Tertre**

The coach will park on the boulevard running along the bottom of the hill. Participants will be able to make their way along the side streets and up the steps to the facade of the Sacre Coeur. Here we will enjoy a spectacular view over the city before entering the church to view the continuous Catholic service inside. The Place du Tertre is closely associated with the Impressionist movement & pupils will be able to see the cafe where Van Gogh painted 'Starry Night' as well as the cobbled sidestreets where Picasso lived for a time. Pupils will be able to admire the many artists at work, perhaps having their own portrait/silhouette done.

18.00

Dinner at Monte Carlo Restaurant, Arc de Triomphe.

www.monte-carlo.fr

19.15

Transfer to Hotel Novotel, Rouen.

21.30

E.T.A. Hotel Novotel, Rouen.